



Nanotechnologische Forschung für die Lebenswissenschaften am Lehrstuhl FMZ

Juergen.groll@fmz.uni-wuerzburg.de
www.fmz.uni-wuerzburg.de

Funktionswerkstoffe der Medizin und Zahnheilkunde



Leitlinie:
Höhere Lebensqualität durch
innovative Materialien

 **BIOLOGIE / MIKROBIOLOGIE / KTV**
akkreditiert (DIN EN ISO 10993-5/6)

 Anerkannt durch/Recognized by
Zentralstelle der Länder
für Gesundheitsschutz
bei Arzneimitteln und
Medizinprodukten
ZLG-AP-212.12.01

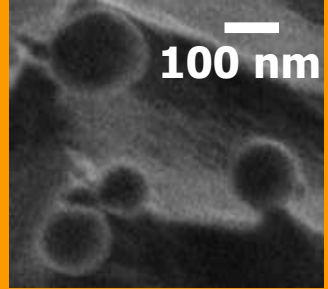
**FUNKTIONALE
POLYMERE**



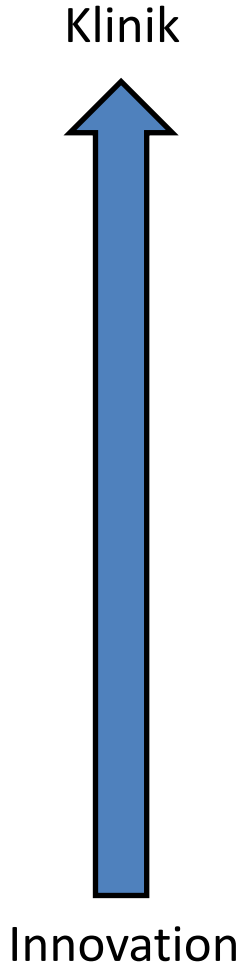
**BIOAKTIVE
ANORGANISCHE
GERÜSTE**



**NANO-
MEDIZIN**

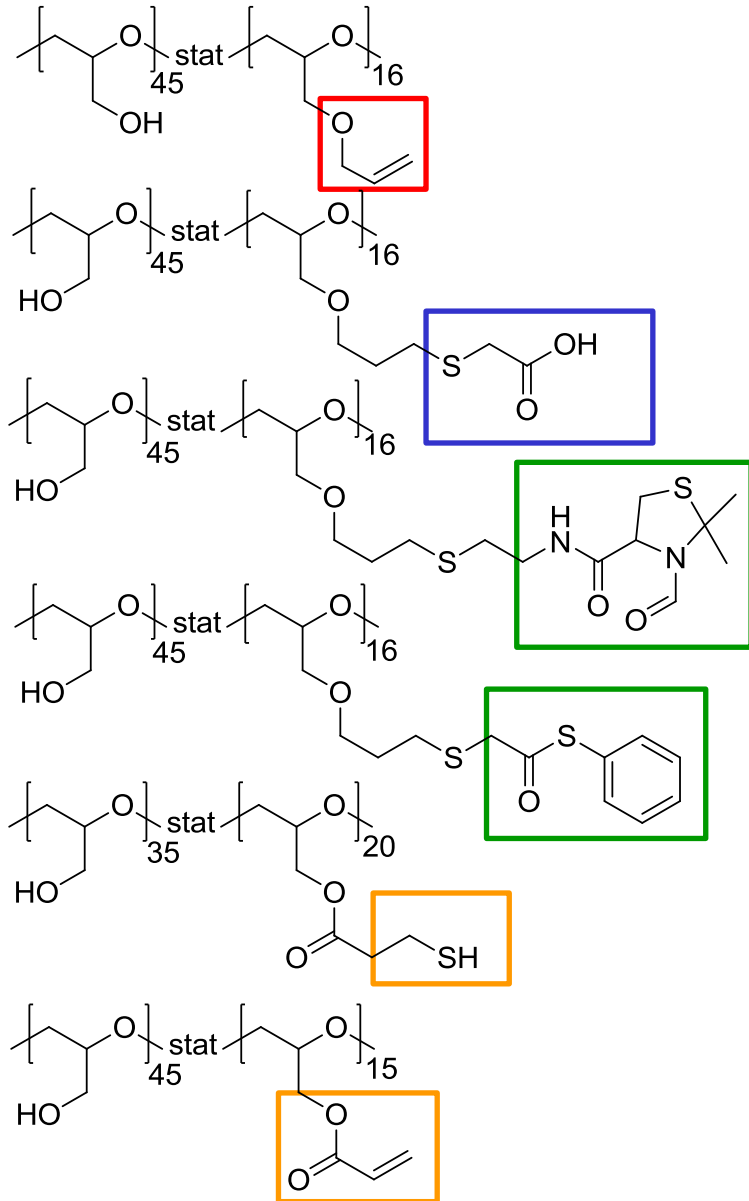


**BIO-
FABRIKATION**

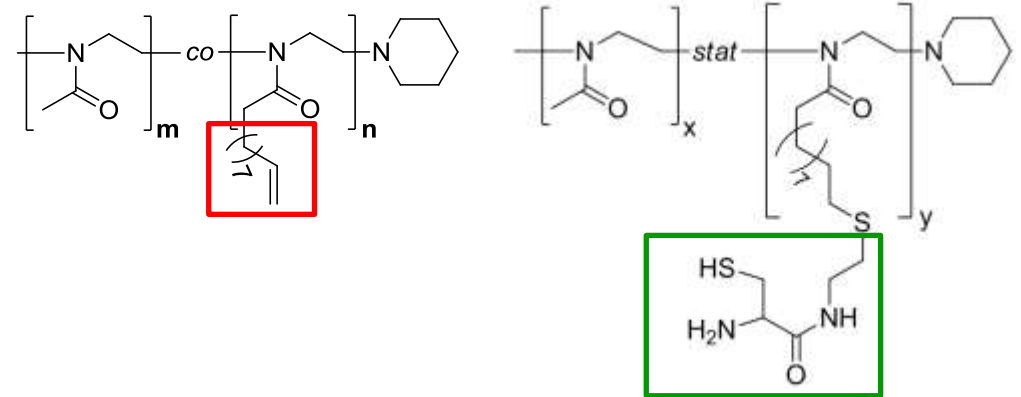


Funktionale Polymere als Bausteine...

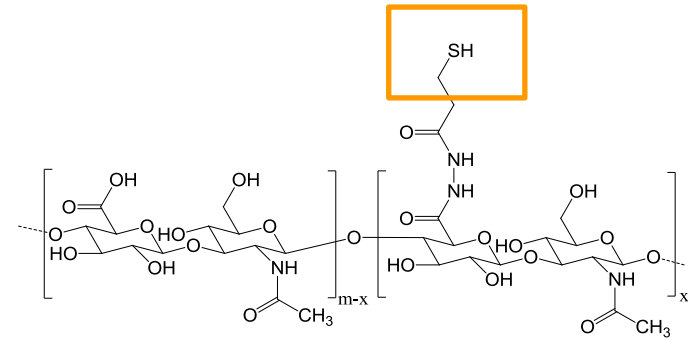
Poly(Glyzidole)



Poly-(2-Oxazoline)

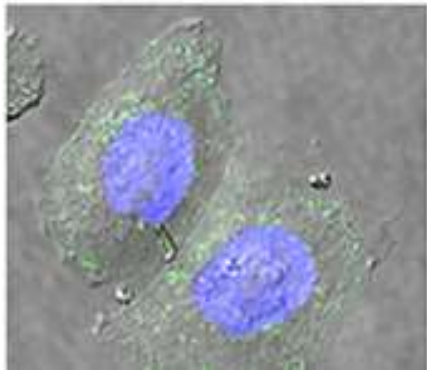
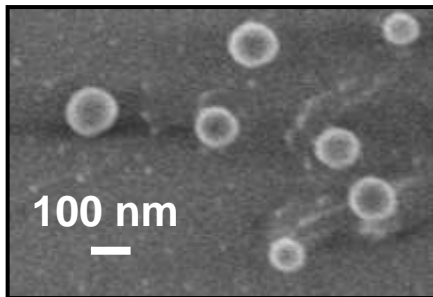
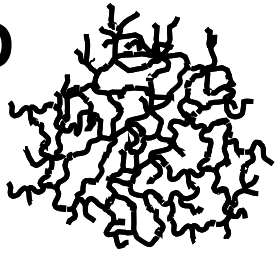


modifizierte Hyaluronsäure

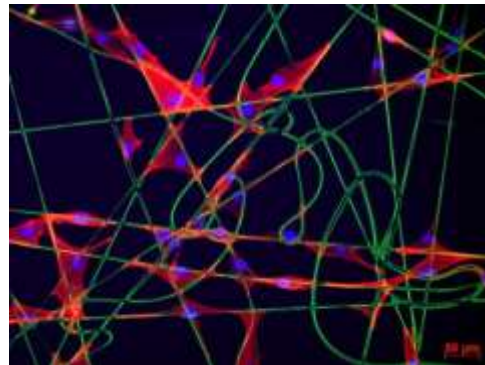
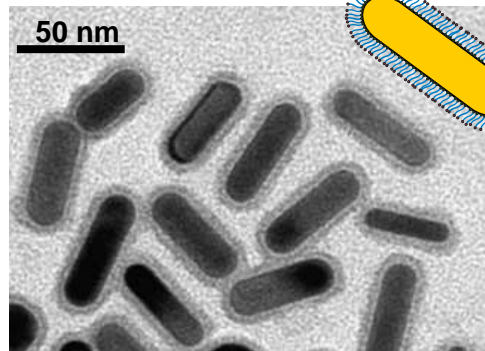
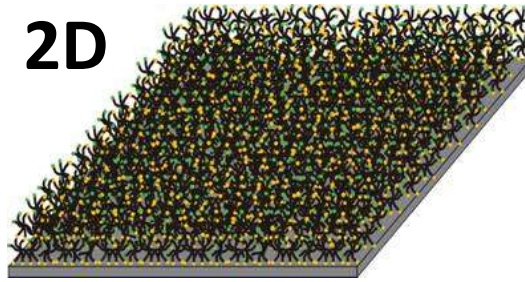


...für bio-aktive und -responsive Hydrogele

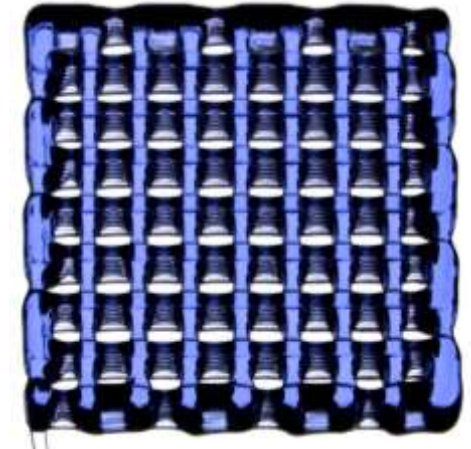
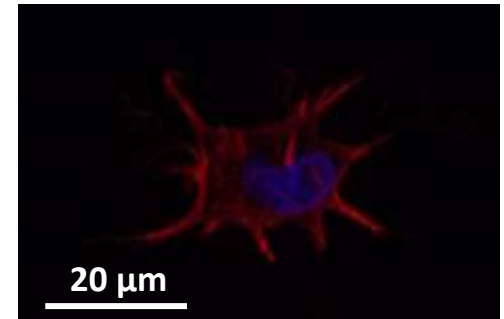
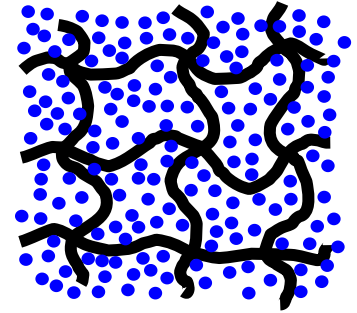
1D



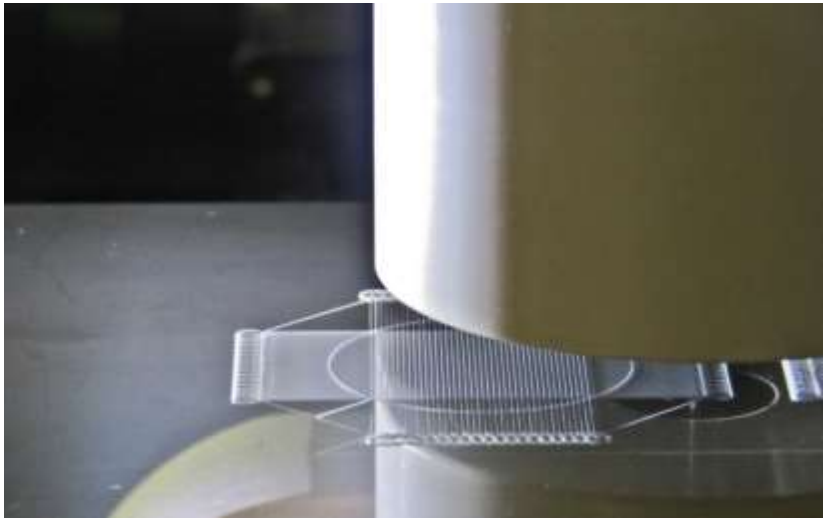
2D



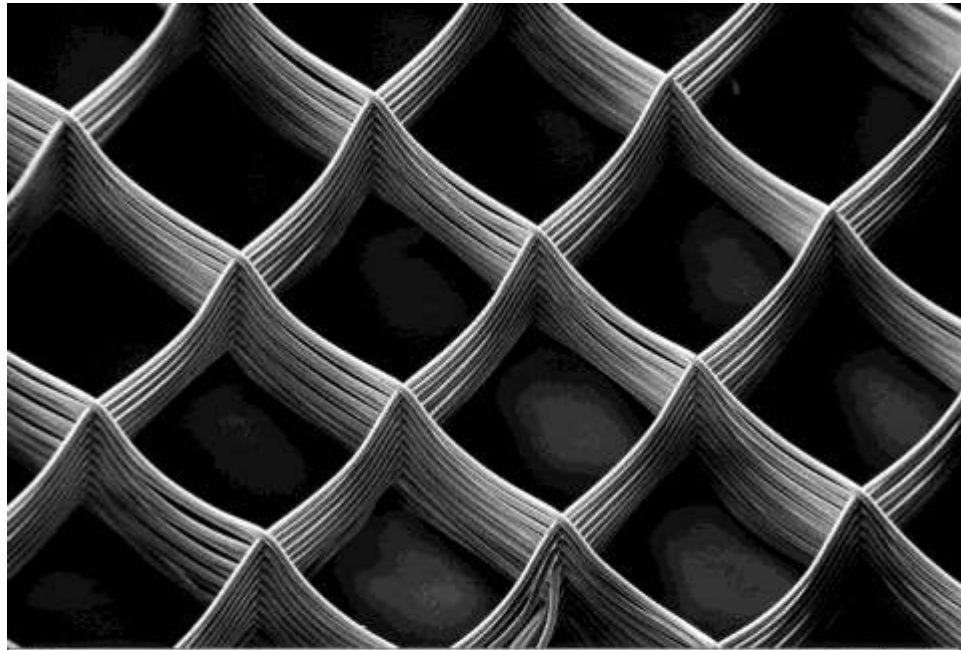
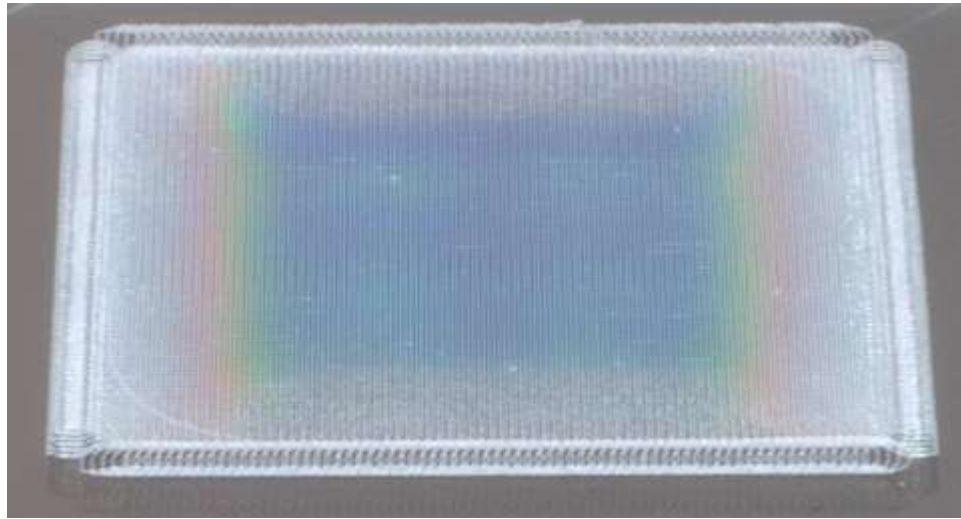
3D



Elektrostat. Verspinnen von Polymerschmelzen - MEW



Automatisierte Bewegung des Kollektors



100 μ m EHT = 1.00 kV Signal A = SE2 Aperture Size = 30.00 μ m Date : 17 Apr 2015
WD = 5.1 mm Mag = 100 X Scan Speed = 4 Time : 9:41:36
Line Avg Count = 49